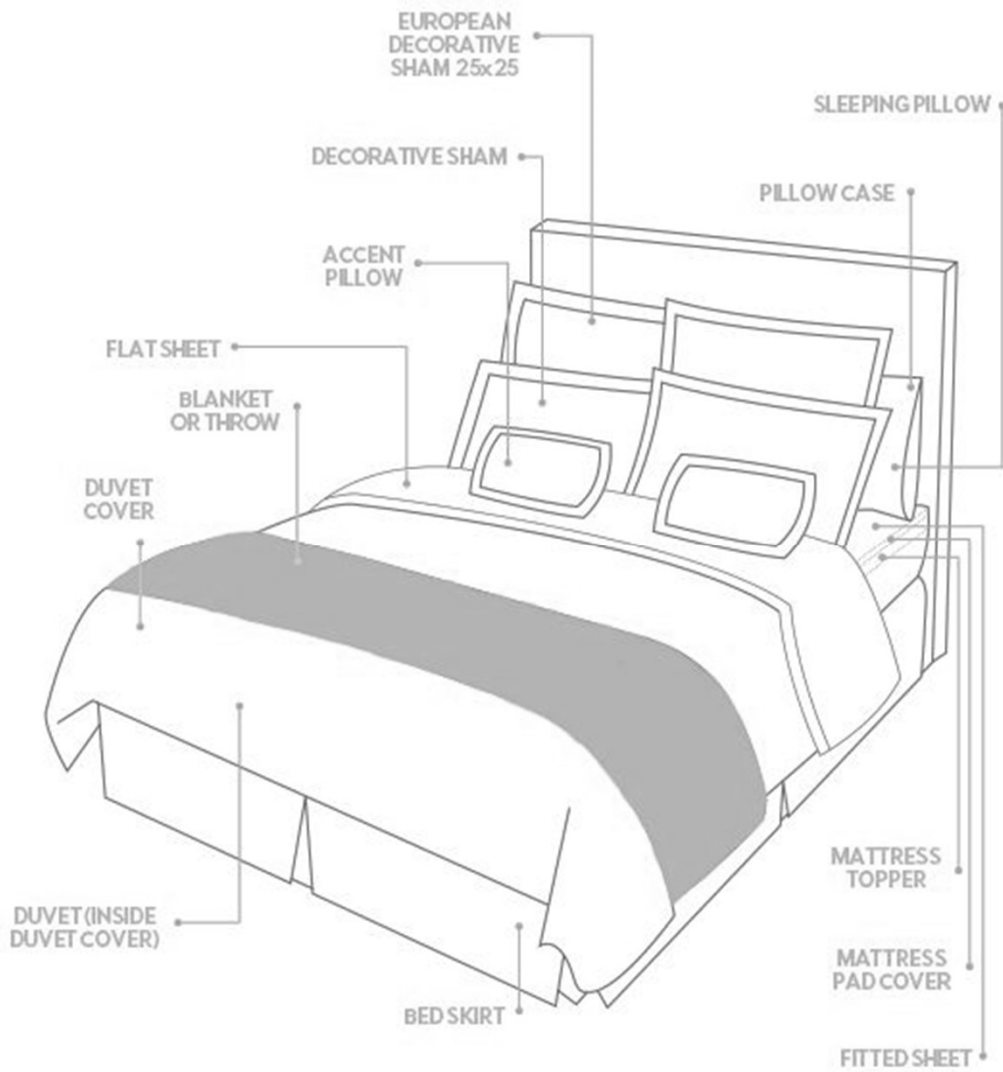




Bed Linen Guide





There are many parts involved with making the perfect bed for your guests optimum comfort in fitting with the yachts design. Owners preference will play a huge part of these decisions but for the charter yachts out there here are some helpful tips and terms.



HONEST
250 THREAD COUNT

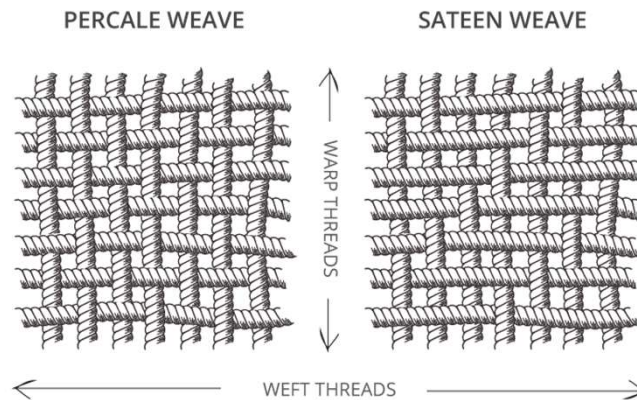
Do not trust a thread count! An honest 250 thread-count sheet set has 125 vertical threads and 125 horizontal threads. A 750 thread-count sheet set ALSO has 125 vertical threads and 125 horizontal threads! But in this situation, the manufacturers simply creates a thread that has 3 ply's (think of a thread made of 3 threads twisted together) and then TRIPLE-counts the thread.

What you need to look for: honest thread counts single ply long staple cotton fibers. For quality you should look for Pima, Egyptian and Supima cotton. If in doubt ASK!

Colors:

Usually guest bedding is either white or ivory, and for yachts that wish to customize with color this is typically in the accents or trim. Traditionally the bedding in the 300-500tc range come in a vast array of colors. The finer linens with a higher thread count are normally only produced in White or Ivory. Some of the more organic brands are also providing unbleached natural cotton options.





Percal sheets have a tight, flat cotton weave with a crisp feel that resembles a dress shirt when ironed. Yes this option will need to be ironed for a finished look. This option breathes well for those who get warm at night, or for warmer climates. Percale sheets have a matte appearance and are very resistant to pilling.

Sateen sheets are woven to create a silky smooth surface with a luminous sheen and is known for its luster and drape. Sateen is usually a little thicker and more tightly woven. It has a soft, inviting touch, perfect to snuggle into bed with during the cold winter months. As the threads are treated the durability of sateen sheets is usually higher than percale and they are an easier care option, with only a light iron needed.

Percal and sateen fabrics have the same function with different qualities. Your sheeting choice depends on personal preference for a honeyed touch and a luminous shine or a crisp hand on a matte surface.

Other Fabrics:

Linen – for a more rustic and natural feel, usually a thicker feel.

Bamboo – for an ecofriendly renewable resource and very soft breathable bedding.

Silk – for that ultimate luxurious beauty sleep.

Tencel – made of Eucalyptus wood pulp. Soft durable and antimicrobial.

Poly/Cotton Blend – inexpensive, durable and wrinkle resistant.



Different Finishing Styles:

Plain/knife edge



Appliqued Ribbon Border



Hemstitch



Lace



Flange



Embroidered



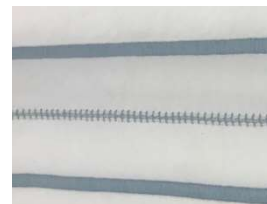
Piped/Corded



Quilted



There are many different options and you can incorporate them together to make a truly bespoke one of a kind bed set, like a double line embroidery with a hemstitch through the middle. Or add a custom monogram or logo.





Styles of Pillowcases

Housewife - This is a simple plain finished pillowcase and an opening on one edge. This style evolved to include an extra flap that can discreetly hide the inside pillow. This should be stated if you require this however as it isn't always included.

Oxford (Sham) - This means that there is a fabric border edge also known as a flange around the pillow. Most people refer to this style as a Sham but in Europe it is called an Oxford.

